

## As Complicated as It Gets



On the 13<sup>th</sup> of February 2019, the PLCS Technical Office received an urgent call regarding the repair of a 48" Westwood & Wright valve located in the centre of a very busy city centre junction.

Because the site was positioned in a highly sensitive area surrounded by traffic at 4 different angles, time was of the essence with essential excavation works beginning immediately.

Once PLCS received confirmation that the site excavation had been completed, an engineering team consisting of Mark Bailey and Chris Darby visited the site the following morning to assess the damaged valve and take necessary fit measurements.

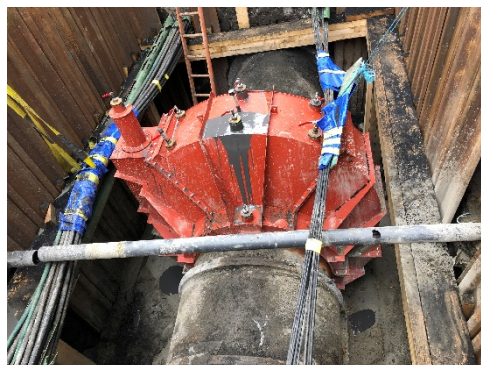
A full assessment of the escape took place with comprehensive measurements taken and immediately sent back to the PLCS technical office where the team began working on the manufacture of a fabricated steel mold.



The proximity of multiple utilities around the valve resulted in the mold being constructed in six different segments which would allow each piece to be inserted into the excavation between the cables.



Due to the complicated nature of the repair, a trial fit of the fabrication was required before the final installation. This trial was successfully undertaken on the 25<sup>th</sup> of February with the final repair taking place on the 1<sup>st</sup> of March.



A follow up visit was necessary the next day to remove the spindle housing in order to retain the operational capability of the valve.



\*\*\*\*\*